

Oracle® Hospitality BellaVita
Installation Manual
Release 2.7

March 2016

Copyright © 1987, 2016, Oracle and/or its affiliates. All rights reserved.

This software and related documentation are provided under a license agreement containing restrictions on use and disclosure and are protected by intellectual property laws. Except as expressly permitted in your license agreement or allowed by law, you may not use, copy, reproduce, translate, broadcast, modify, license, transmit, distribute, exhibit, perform, publish, or display any part, in any form, or by any means. Reverse engineering, disassembly, or decompilation of this software, unless required by law for interoperability, is prohibited.

The information contained herein is subject to change without notice and is not warranted to be error-free. If you find any errors, please report them to us in writing.

If this software or related documentation is delivered to the U.S. Government or anyone licensing it on behalf of the U.S. Government, then the following notice is applicable:

U.S. GOVERNMENT END USERS: Oracle programs, including any operating system, integrated software, any programs installed on the hardware, and/or documentation, delivered to U.S. Government end users are "commercial computer software" pursuant to the applicable Federal Acquisition Regulation and agency-specific supplemental regulations. As such, use, duplication, disclosure, modification, and adaptation of the programs, including any operating system, integrated software, any programs installed on the hardware, and/or documentation, shall be subject to license terms and license restrictions applicable to the programs. No other rights are granted to the U.S. Government.

This software or hardware is developed for general use in a variety of information management applications. It is not developed or intended for use in any inherently dangerous applications, including applications that may create a risk of personal injury. If you use this software or hardware in dangerous applications, then you shall be responsible to take all appropriate fail-safe, backup, redundancy, and other measures to ensure its safe use. Oracle Corporation and its affiliates disclaim any liability for any damages caused by use of this software or hardware in dangerous applications.

Oracle and Java are registered trademarks of Oracle and/or its affiliates. Other names may be trademarks of their respective owners.

Intel and Intel Xeon are trademarks or registered trademarks of Intel Corporation. All SPARC trademarks are used under license and are trademarks or registered trademarks of SPARC International, Inc. AMD, Opteron, the AMD logo, and the AMD Opteron logo are trademarks or registered trademarks of Advanced Micro Devices. UNIX is a registered trademark of The Open Group.

This software or hardware and documentation may provide access to or information on content, products, and services from third parties. Oracle Corporation and its affiliates are not responsible for and expressly disclaim all warranties of any kind with respect to third-party content, products, and services. Oracle Corporation and its affiliates will not be responsible for any loss, costs, or damages incurred due to your access to or use of third-party content, products, or services.

Contents

Preface	4
Audience	4
Customer Support	4
Documentation	4
Revision History	4
1 Prerequisites	5
2 Installation	7
Preparing an offline installation	7
Executing an online installation at customer's site	8
Executing an offline installation at customer's site	9
The installation dialogue (offline and online)	10
3 Tasks following installation	17
Backup	17
DB maintenance	17
Configuring the Workstations	17
4 Setup continued if not set in installation	21
Installation of BellaVita train	21
Set up of PMS connection	21
Live.properties	21
Local.properties	21
Setenv.bat	22
Interface	23
Common changes to details set in installation	23
Other changes	23
5 Tips and Tricks	25

Preface

This document is created to provide guidelines for the installation of BellaVita. It contains of three simple steps: gather the necessary files for the most up to date release, unpack these files on the server and start the installation process.

Audience

This installation guide for BellaVita is intended for system administrators and support familiar with BellaVita.

Customer Support

To contact Oracle Customer Support, access My Oracle Support at the following URL:
<https://support.oracle.com>

When contacting Customer Support, please provide the following:

- Product version and program/module name
- Functional and technical description of the problem (include business impact)
- Detailed step-by-step instructions to re-create
- Exact error message received
- Screen shots of each step you take

Documentation

Oracle Hospitality product documentation is available on the Oracle Help Center at
<http://docs.oracle.com/en/industries/hospitality/>

Revision History

Date	Description of Change
June 18, 2013	<ul style="list-style-type: none">• Initial publication. Document Version Number: 1.0

1 Prerequisites

Before starting the installation, please make sure you have the necessary information and requirements fulfilled.

- Hardware requirements:



Acrobat Document

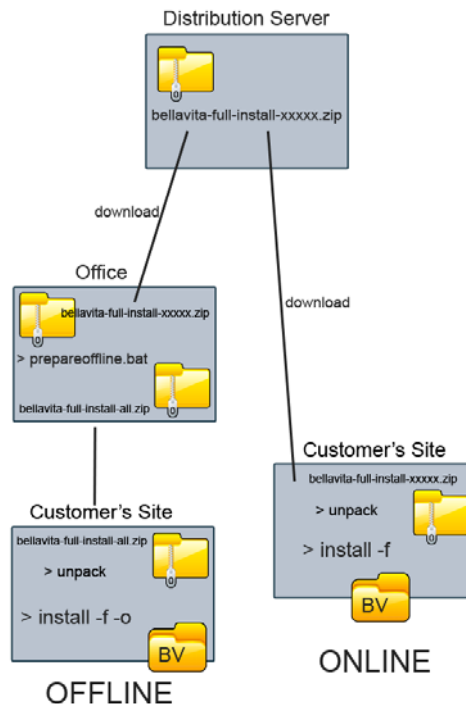
- Valid License
- Connection details:
 - o BellaVita server: remote access (VPN, etc.) username and password
 - o IFC server (FIAS/HTNG): host name, ports, username and password
 - o PMS database and application server: host name, ports, username and password
 - o Database users:
 - Sys user's password
 - PMS LIVE and TRAIN username and password
- Installation details: language and currency used by Spa/Hotel; VAT inclusive or not, fiscalisation used

2 Installation

Download the `bellavita-full-install-XXXXX.zip` file from the BellaVita distributions servers, from the following link (log in credentials `bellavita/bricnam`)

<http://bellavita.microscdc.com/distr/full-install/>

Unpack the `.zip` file into a temporary directory on the BellaVita server, for example: `C:\BV`



Preparing an offline installation

If you intend to do an offline installation, then first you will need to collect the necessary data from the FTP distribution server. To do that, open a Command Line and navigate to the directory where you have extracted the `bellavita-full-install-XXXXX.zip` file.

Once you are there, enter `prepareoffline` to the command line to download the remaining data for the installation.

```
C:\BV>prepareoffline
Preparing offline installation by collecting required files into this mirror directory
*** Attention: Repeat this operation before each new installation ***
*** Else you may go around installing old product releases ***
Getting required components from the BellaVita distribution server ...
Synchronizing current release distribution with BellaVita distribution server
See progress in window title
Please ignore any "The system cannot find the file specified." messages ...
Synchronizing release-current ...
```

During the download the following transfer error might appear in the Dos Box:

“The system cannot find the file specified.” Or “No such file...”

```
check.transfer.log:
  [if] wget.log: No such file 'commons.zip'.
  [if] wget.log: No such file 'ws.zip'.
  [if] wget.log: No such file 'openjms.zip'.
  [if] wget.log: No such file 'services.zip'.

BUILD FAILED
C:\BU\build.xml:299: Error in ftp transfer log wget.log.
File transfer may be incomplete.
Repeat the "prepareoffline" command.

Total time: 1 second
C:\BU>prepareoffline
```

If this error message occurs during the download, repeat the `prepareoffline` command until the process finishes without any error messages displayed.

```
adding: dnload-i/release-current/dll/reporting2.zip (stored 0%)
adding: dnload-i/release-current/dll/ws.zip (stored 0%)
adding: dnload-i/rt.zip (stored 0%)
adding: dnload-i/services.zip (stored 0%)
adding: lib/ (stored 0%)
adding: lib/ant-apache-oro.jar (deflated 15%)
adding: lib/ant-commons-net.jar (deflated 9%)
adding: lib/ant-contrib-1.0b3.jar (deflated 9%)
adding: lib/ant-launcher.jar (deflated 8%)
adding: lib/ant.jar (deflated 8%)
adding: lib/filesynch.jar (stored 0%)
adding: lib/w4ydeploy.jar (deflated 8%)
adding: templates/ (stored 0%)
adding: templates/setenv.bat (deflated 48%)

-----
bellavita offline installation file creation completed.
Please make sure that the size of bellavita-full-install-all.zip is approx. 190
MB
Make sure you have a valid microsfidelio licence at hand for the installation!
At customers site
- unzip bellavita-full-install-all.zip into a separate installation directory and
d
- start installation with 'install -f -o'
C:\BU>
```

After the Script is finished a new .zip file is created. The `bellavita-full-install-all.zip` contains all the necessary data to execute a full offline installation at the customer's site.

If the size of this file is around 240 MB, this is what needs to be on the customer's server to start the installation.

It is important to repeat this process before each new installation to prevent installing older releases.

Executing an online installation at customer's site

The first thing you need to do is to connect the BellaVita server, and create an optional directory for the installation, for example: `C:\bellavita` **Make sure there is no space in the folder name!**

To do an online installation, a proper internet connection is required at the customer's site for downloading the installation data. First you need to download the `bellavita-full-install-XXXXX.zip` file from the BellaVita distribution server, and unpack it into an optional folder on the server.

Then open a command prompt, and navigate to the folder where you have unpacked your .zip file and type: `install -f` to start the installation process.

Executing an offline installation at customer's site

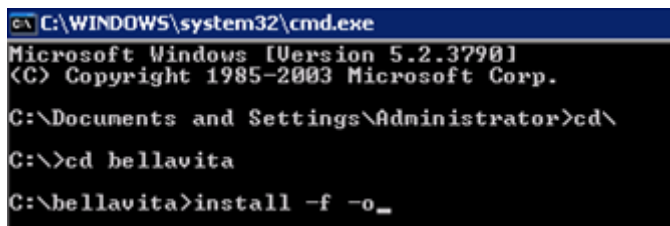
The first thing you need to do is to connect the BellaVita server, and create an optional directory for the installation, for example: `C:\bellavita`

After this unpack your `bellavita-full-install-all.zip` file into this directory.

Before you start the installation, make sure:

- you have at least 500 MB free disk space on the target drive
- the 'services' window is closed

If all the files are unpacked, start a command line and navigate to the newly created directory and type: `install -f -o` to start the installation process.



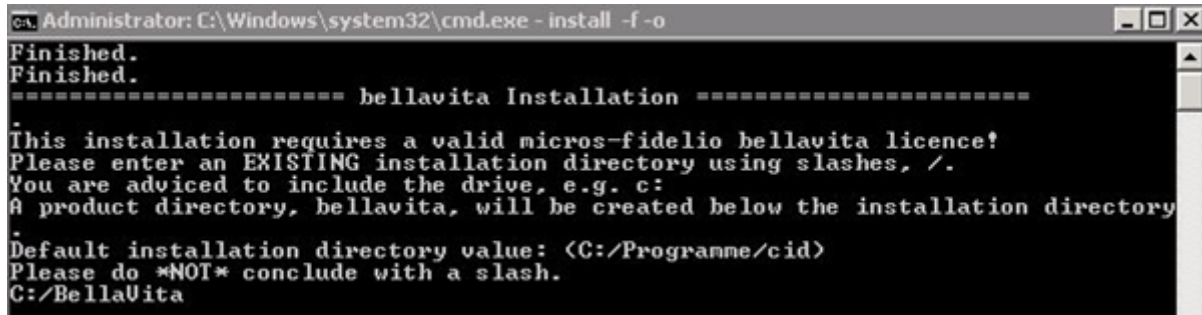
```
C:\WINDOWS\system32\cmd.exe
Microsoft Windows [Version 5.2.3790]
(C) Copyright 1985-2003 Microsoft Corp.
C:\Documents and Settings\Administrator>cd\
C:\>cd bellavita
C:\bellavita>install -f -o_
```

The installation dialogue (offline and online)

Once the `install -f` or `install -f -o` command is executed, you will receive a list of questions in the installation process.

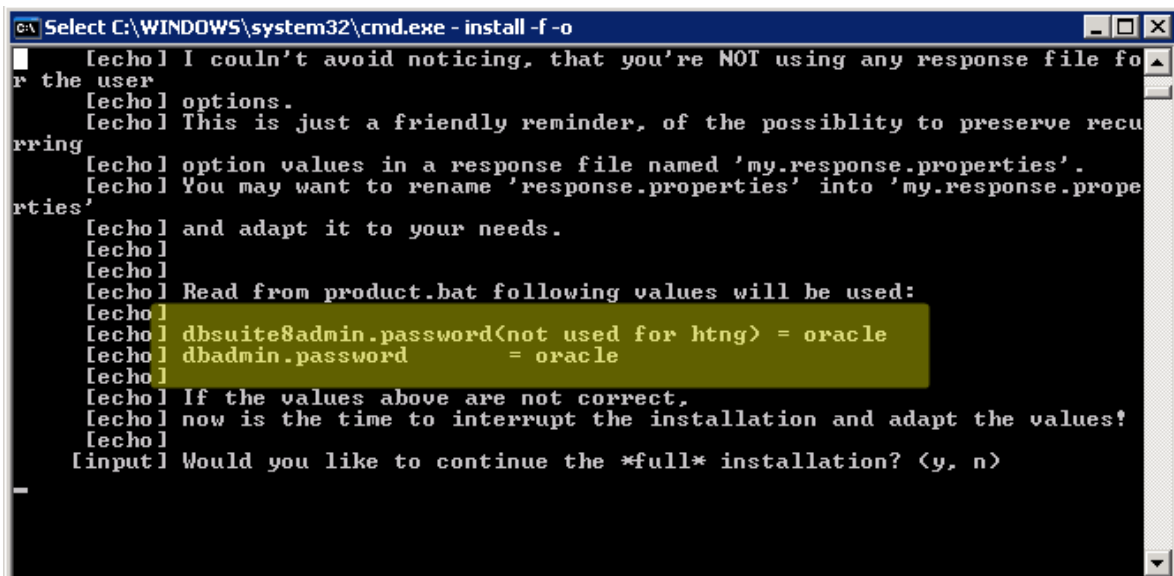
First you need to define the existing directory where we would like to install the application

- o It is important to use forward slashes when defining the directory,
- o do not conclude it with a slash.



```
Administrator: C:\Windows\system32\cmd.exe - install -f -o
Finished.
Finished.
==== bellavita Installation =====
This installation requires a valid microsfidelio bellavita licence!
Please enter an EXISTING installation directory using slashes, /.
You are advised to include the drive, e.g. c:
A product directory, bellavita, will be created below the installation directory
Default installation directory value: (C:/Programme/cid)
Please do *NOT* conclude with a slash.
C:/BellaVita
```

1. Before you continue with the installation make sure that both the Database user and password are correct:



```
Select C:\WINDOWS\system32\cmd.exe - install -f -o
[echo] I couldn't avoid noticing, that you're NOT using any response file fo
r the user
[echo] options.
[echo] This is just a friendly reminder, of the possibility to preserve recu
rring
[echo] option values in a response file named 'my.response.properties'.
[echo] You may want to rename 'response.properties' into 'my.response.prope
rties'
[echo] and adapt it to your needs.
[echo]
[echo] Read from product.bat following values will be used:
[echo]
[echo] dbsuite8admin.password(not used for htng) = oracle
[echo] dbadmin.password = oracle
[echo]
[echo] If the values above are not correct,
[echo] now is the time to interrupt the installation and adapt the values!
[echo]
[input] Would you like to continue the *full* installation? (y, n)
n
```

If any of these values is incorrect, you can interrupt the installation and change these values. To do so, type `N` to the console.

You have to change the password and then start the installation again.

It is no longer advised to open the `product.bat` file and edit the relevant lines, you have to change them by commands in the same cmd. To change `dbadmin.password`:

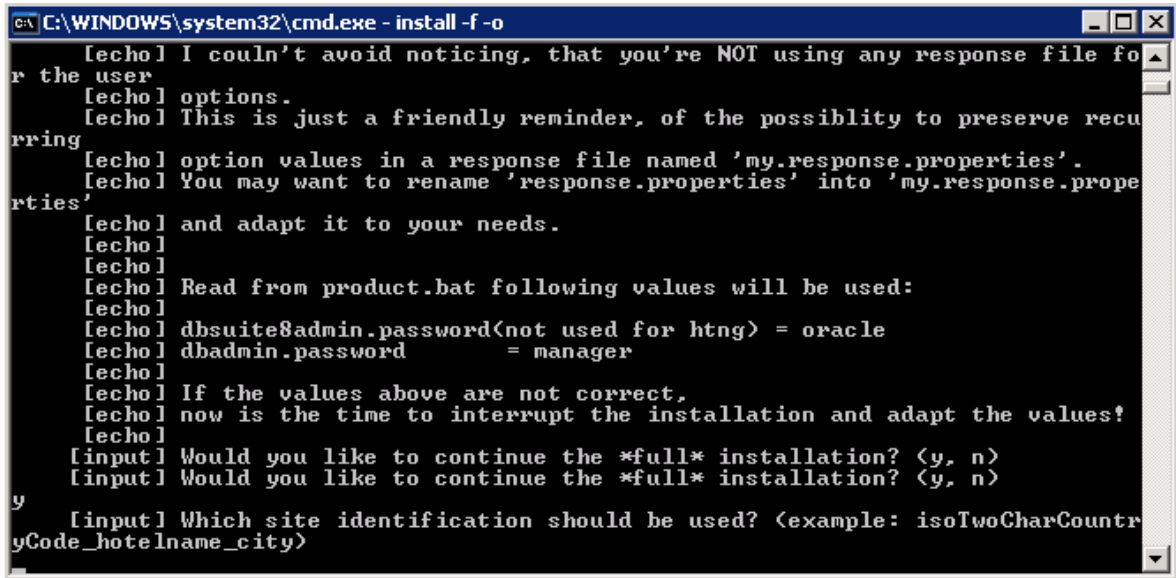
```
ant change.password -Dname=dbadmin.password -Dvalue=adminpwd
```

```
ant change.password -Dname=dbadmin.password -Dvalue=password
```

When you are done editing the details, save the file and restart the installation. When you get to this question again, type in **Y** and **press enter** to continue.

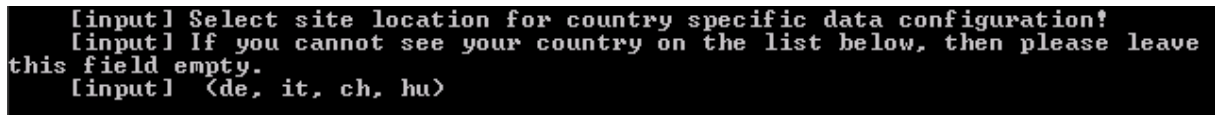
- In the next step you need to enter the site identification in the following format:

isoTwoCharCountryCode_SPAname_Cityname

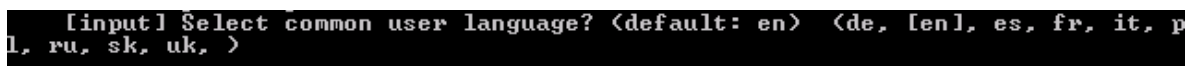


ie.: HU_Micros_Budapest – please make sure you that the license name is reconisable based on this.

- The following question is used to determine the zip to city and medical information preloaded in the application.



- After this, select the language of the users and the application: (default is English)



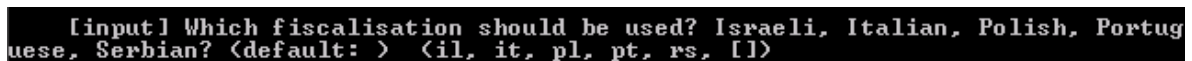
Press enter if no change required, or type in one of the above codes and then enter.

- The next step is to enter the default currency used by the SPA / Hotel: (default: EUR)



Press enter if no change required, or type in one of the above codes and then enter.

- Then select the fiscalisation that should be used: (default: none)



Press enter if no change required = no fiscalisation, or type in one of the above codes and then enter.

7. In the next step define if the VAT is included in the product prices (most countries) or not:

```
[input] Should VAT be included in the product prices? For some countries like U.S. and Israel choose 'n' (default: y) (y, n, )
```

8. After this you need to enter the BellaVita Database (SID) name: (default: BV) – BV if standalone; V8 or OPERA if connected to PMS

```
[input] Please enter the name(sid) of the bellavita database? (default: BV) [BV]
```

9. Then you need to define the hostname / IP address and the port of the BellaVita Database:
(default: HOSTNAME:1521)

```
[echo] Set Oracle specific configuration...  
[input] On which host and port is the database (bellavita) installed? (default: BELLAUITA-CLEAN:1521) [BELLAUITA-CLEAN:1521]
```

10. In the next step you need to decide if you want to install a TRAINING DATABASE as well or not:
(default: n) – it can be installed later. Instructions of later installation of train is provided at the end of this documentation.

```
[input] Do you want to install database train as well. You may wait until later (n)? (y, [n], )
```

11-12-13-14. In the next few steps you need to enter the settings of the email application built in the BellaVita. First you need to enter the email address of level 1 support (usually local MF office support), who can be contacted if an error message occurs in BV. Then you need to define the mail server used by the customer site, the port number, the user and the password – leave it on default.

```
[input] Please enter the email receiver address for 1:st level support messages: gtttoth@micros.com  
[input] Please enter the SMTP server (mail.netzone.ch): [mail.netzone.ch]  
[input] Please enter the SMTP port number (25). If problem, try 587: [25]  
[input] Please enter the SMTP user (definitive.ch1008): [definitive.ch1008]  
[input] Please enter the SMTP password (bellavista): [bellavista]
```

15. In the next step you can enter the email address of a local site administrator – usually IT manager.

```
[input] Please enter an email address of a local site administrator:  
_
```

Then you can define the interface and its details that is connecting BV to the PMS:

- FIAS interface host = IFC server. Port: normally 5010.
- FIAS gateway is hosted on the BellaVita server with port 5001.

In the last step you can setup the source PMS Database from where you would like to import the guest: (Default: Suite8)

If you make a standalone installation and there is no PMS connection than select none. If the PMS connection is with Opera the interface can be HTNG or FIAS - with Suite8 the only option is FIAS. This connection can also be set up at a later stage – instructions found later in this document.

```
[echo] The installation is NOT relying on a running fias/htng interface.
[input] Connect to pms system for billing etc. <fias>? <htng, [fias], none,
>
[input] fias interface host <LGHS-ORACLE>? [LGHS-ORACLE]
LGHS-IFC01
[input] fias interface port <5010>? [5010]
[echo] A fias gateway service will be installed on LGHS-ORACLE.
[echo] If you choose another host for the service, you have to install it y
yourself later on.
[input] fias gateway host <LGHS-ORACLE>? [LGHS-ORACLE]
[input] fias gateway port <5001>? [5001]
[input] Guest import from external system. <suite8>? <opera, [suite8], fide
lio6, none, >
[input] On which host and port is the pms database installed? <default: LGHS
-ORACLE:1521> [LGHS-ORACLE:1521]
U8] [input] Please enter the name, SID, of the suite8 database? <default: U8> [
BLIVE]
[input] Please enter the name of the suite8 live user? <default: U8LIVE> [U
```

Please note that if the server that you are using has only the database ready but not the application at the time of the installation then choose no PMS connection and set it up later.

MyVisitors integration is available from version 2.7:

```
[input] Do you want to enable myVisitors integration <default: n>? <y, [n],
>
```

Authentication mode can be altered from the original BellaVita authentication to Ldap (it can also be set up at a later stage)

```
[input] Which authentication mode do you want to use <default: BellaVita>?
<[BellaVital, Ldap, >
```

At the end of these questions you will get a summary of all your answers and you can decide if you want to continue with the installation or change on these settings.

Before you are continuing you can check all the details given and confirm:

```

bellavita.show:
[echo]
[echo] Property                Configured Value
[echo] -----
[echo] Site Identification         EAME_test_fullinstall
[echo] Language                    en
[echo] Country                     EUR
[echo] Currency                    EUR
[echo] Fiscalisation              y
[echo] gross vat                   y
[echo] DBMS                        oracle
[echo] Database Host               BELLAVITA-CLEAN:1521
[echo] Database Name BellaVita    BU
[echo] Create training database   n
[echo]
[echo] SMTP configurations        mail.netzone.ch, 34069, bellavista
[echo] Support email address      bszecsenyi@micros.com
[echo] Local admin email         bszecsenyi@micros.com
[echo] External billing          none
[echo] fias interface host:port   :
[echo] fias gateway host:port    :
[echo] guestimport.enable        false
[echo] pms product
[echo] pms import version
[echo] pms host
[echo] htng host
[echo] htng port
[echo] htng resort
[echo] htng user
[echo] htng password              xxxxxx
[echo] htng pms source
[echo] htng bellavita source
[echo]
[echo] myvisitor.enabled         n
[echo] myvisitor.uri
[echo] myvisitor.password        xxxxxx
[echo]
[echo] authentication.mode       BellaVita
[echo] authentication.ldap.group
[echo] authentication.ldap.base
[echo] authentication.ldap.serverURL
[echo] authentication.ldap.user
[echo] authentication.ldap.password xxxxxx
[echo]

```

If all the entered information is correct then simply type Y and press enter so the installation process starts. In the first part of the installation several editable files will be created in the

C:\bellavita\local-settings\HOSTNAME directory, such as the:

```

local.properties
live.properties
train.properties

```

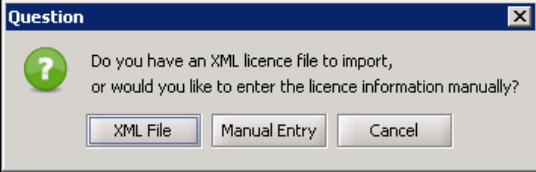
If there are any settings that you want to change before proceeding, chose no, then you can edit these files, save them and then restart the installation. The installation will keep the edited data, so after setting the directory, you get to the summary screen again.

Once you confirm the details, the next step shows you that you can set up specific reminders for any installation/upgrade related tasks:

```
C:\WINDOWS\system32\cmd.exe - install -f -o
fill.download:
  [copy] Copying 18 files to C:\bellavita\download
release.unzip:
  [unzip] Expanding: C:\bellavita\download\release-current\bellavita2.6.4.13_201
10706_124938.zip into C:\bellavita
install.current:
  [echo] Creating environment setup file 'setenv.bat' for future upgrades...
  [copy] Copying 1 file to C:\bellavita\deployment
  [echo] Creating property files (local.properties, live.properties, train.pr
operties)...
setup.local.settings:
  [mkdir] Created dir: C:\bellavita\local-settings\BELLAVITA-CLEAN
  [echo] Creating local-settings for 36_SPADanubius_Budapest
  [copy] Copying 3 files to C:\bellavita\local-settings\BELLAVITA-CLEAN
  [echo]
  [echo] Local settings 'C:/bellavita/local-settings/BELLAVITA-CLEAN' setup s
uccessfully.
  [echo] You may want to check & modify the result before continuing.
  [echo] If you're installing into an oracle instance created by the customer
'
  [echo] you probably have to adapt the names of the table spaces and even db
admin.user.
  [echo] You also have the option to define specific instructions for future
upgrades in
  [echo] 'C:/bellavita/local-settings/BELLAVITA-CLEAN/reminder.txt'.
  [echo]
  [input] Continue installing. (y)? <[y], n, >
```

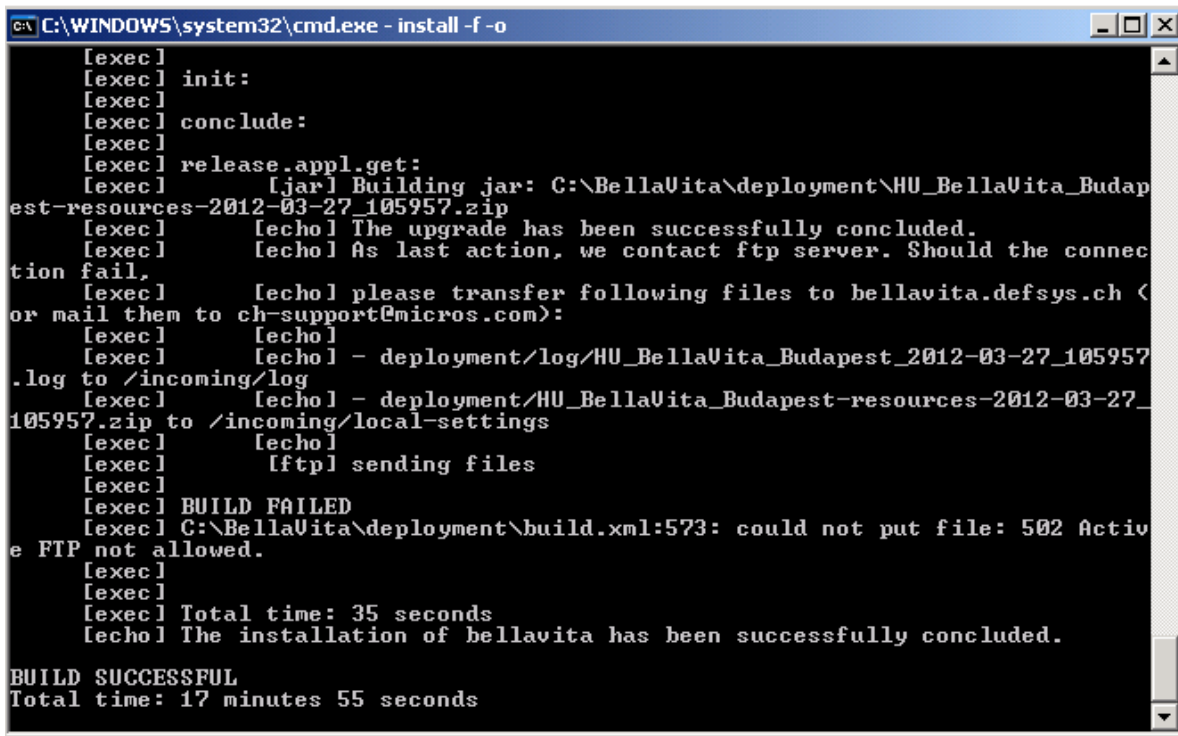
During the process a pop-up window will ask you to enter a valid BellaVita license. You can either import it from an .xml file, or type in manually:

```
C:\WINDOWS\system32\cmd.exe - install -f -o
set.appParameter:
  [echo]
  [echo] We start the application to inititate generation of some system code
values.
  [echo] You might be asked to enter a valid licence.
  [echo] Watch out for a dialog hiding behind this dos box!
  [echo] And: Don't worry...
  [echo]
  [echo] Should an error occur all the same, please consult the application l
og files in
  [echo] \Documents and Settings\Administrator\bellavita\log
  [echo]
```



After entering the valid license, the installation will proceed and in a few minutes it will finish with a Build Successful message, and the total time of the installation will be displayed. The BellaVita Application will start automatically upon finishing the process.

It may be possible that you get the below message:

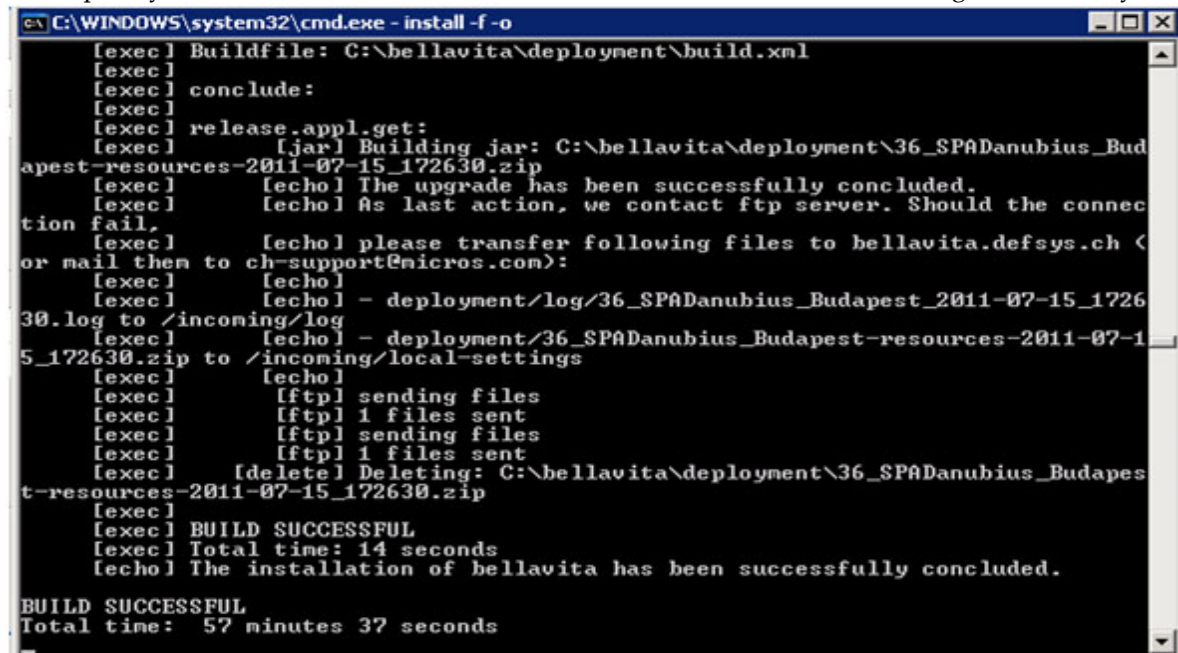


```
C:\WINDOWS\system32\cmd.exe - install -f -o
[exec]
[exec] init:
[exec]
[exec] conclude:
[exec]
[exec] release.appl.get:
[exec] [jar] Building jar: C:\BellaVita\deployment\HU_BellaVita_Budapest-resources-2012-03-27_105957.zip
[exec] [echo] The upgrade has been successfully concluded.
[exec] [echo] As last action, we contact ftp server. Should the connection fail,
[exec] [echo] please transfer following files to bellavita.defsys.ch (or mail them to ch-support@micros.com):
[exec] [echo]
[exec] [echo] - deployment/log/HU_BellaVita_Budapest_2012-03-27_105957.log to /incoming/log
[exec] [echo] - deployment/HU_BellaVita_Budapest-resources-2012-03-27_105957.zip to /incoming/local-settings
[exec] [echo]
[exec] [ftp] sending files
[exec]
[exec] BUILD FAILED
[exec] C:\BellaVita\deployment\build.xml:573: could not put file: 502 Active FTP not allowed.
[exec]
[exec]
[exec] Total time: 35 seconds
[echo] The installation of bellavita has been successfully concluded.

BUILD SUCCESSFUL
Total time: 17 minutes 55 seconds
```

As you see the build failed is only notifying you about the update of the ftp server – which is not relevant in the success of the installation.

A completely successful installation should look like this – with BellaVita starting automatically.



```
C:\WINDOWS\system32\cmd.exe - install -f -o
[exec] Buildfile: C:\bellavita\deployment\build.xml
[exec]
[exec] conclude:
[exec]
[exec] release.appl.get:
[exec] [jar] Building jar: C:\bellavita\deployment\36_SPADanubius_Budapest-resources-2011-07-15_172630.zip
[exec] [echo] The upgrade has been successfully concluded.
[exec] [echo] As last action, we contact ftp server. Should the connection fail,
[exec] [echo] please transfer following files to bellavita.defsys.ch (or mail them to ch-support@micros.com):
[exec] [echo]
[exec] [echo] - deployment/log/36_SPADanubius_Budapest_2011-07-15_172630.log to /incoming/log
[exec] [echo] - deployment/36_SPADanubius_Budapest-resources-2011-07-15_172630.zip to /incoming/local-settings
[exec] [echo]
[exec] [ftp] sending files
[exec] [ftp] 1 files sent
[exec] [ftp] sending files
[exec] [ftp] 1 files sent
[exec] [delete] Deleting: C:\bellavita\deployment\36_SPADanubius_Budapest-resources-2011-07-15_172630.zip
[exec]
[exec] BUILD SUCCESSFUL
[exec] Total time: 14 seconds
[echo] The installation of bellavita has been successfully concluded.

BUILD SUCCESSFUL
Total time: 57 minutes 37 seconds
```

The startup file of BellaVita is in you installation folder: \bellavita\bin\runlive.bat

You can log in by the default superuser: cid/mic

3 Tasks following installation

After the installation has been completed, there are the following tasks to be completed:

Backup

- setup the backup windows scheduled task by: Administrative Tools – task scheduler. Schedule it to run the dbbup.bat file found in deployment folder every 4 hours. This will create the backup file in %BellaVita directory/backup/bellavita/db. The backup directory can be set in local.properties, by the below details.

```
# db.backup.dir=c:/temp
db.backup.dir=d:/Bellavita/backup/bellavita/db
# Keep copies on an external location
db.backup.dir.ext=
# Max age[hours] for database backup files before deleting
ageinhours=48
# Always leave at least 'nb.files.preserved'
nb.files.preserved=5
appl.backup.dir=d:/Bellavita/backup/bellavita/appl
# send confirming emails to the local administrator
confirm.successful.backups=true
# Do not send confirmations more often than this period:
confirm.period.hours=24
```

To implement the changes in this file:

```
CMD>deployment>setenv
ant runtime.update
```

DB maintenance

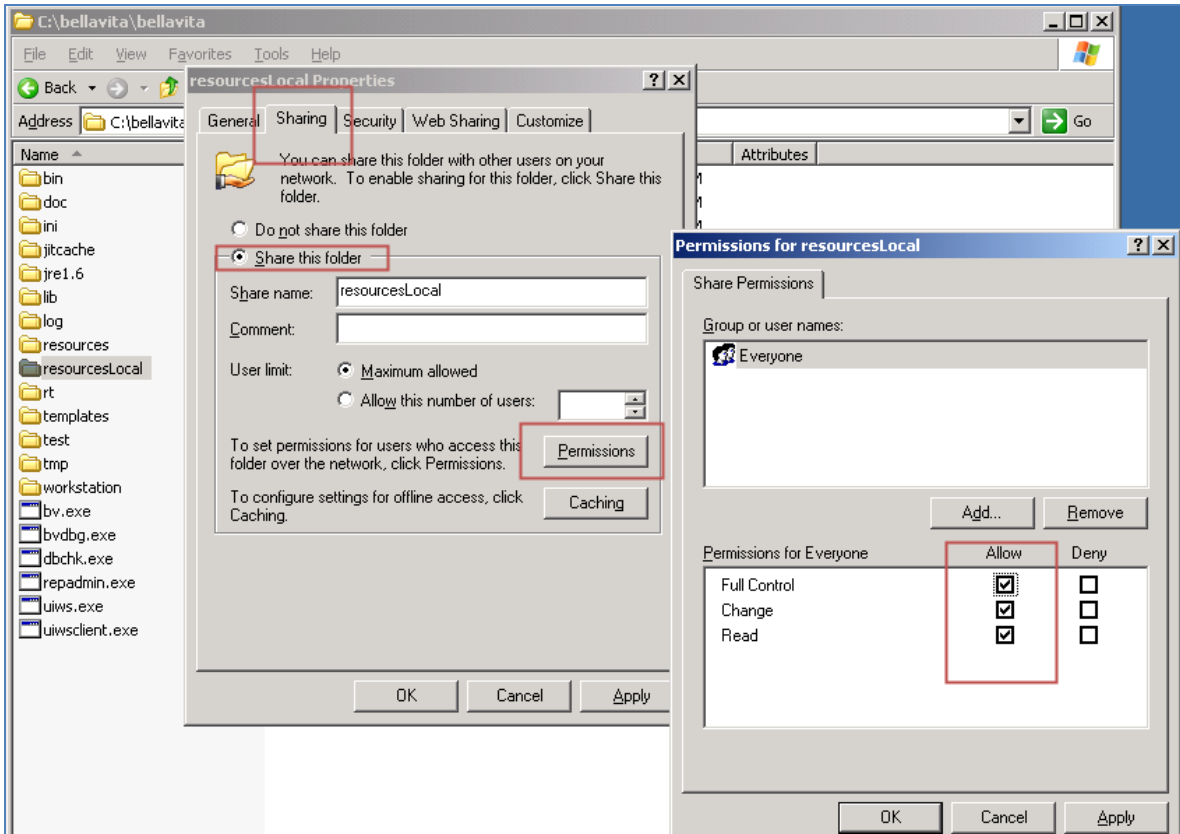
- set up windows scheduled task to execute **dbmaint.bat** in deployment folder for every week (for example Sunday nights) for database maintenance
- Share the %BellaVita directory/bellavita folder to all users

Configuring the Workstations

No software installation is required on the client / workstation side. The BellaVita application can be started by executing a .bat file found on the server. To do this first you need to share the folder where the application have been installed. In this case: C:\bellavita.

To share a folder right click on the folder and chose the Properties option. Under the Sharing Tab chose the 'Share this folder' option.

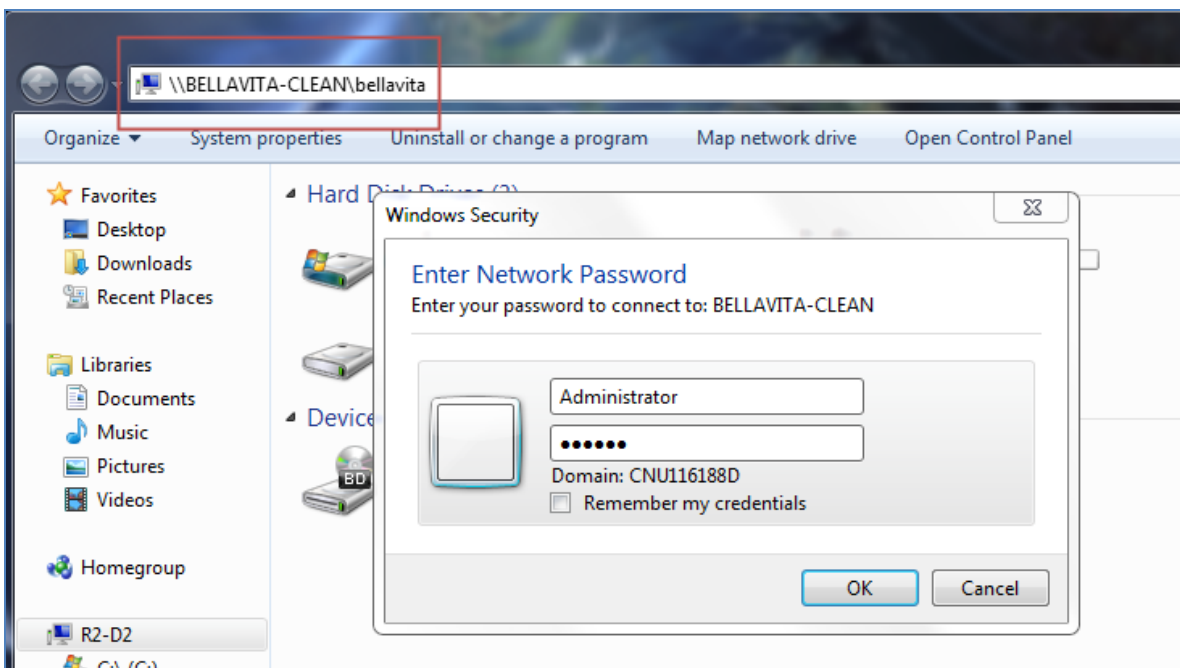
You also need to share the C:\bellavita\ResourceLocal folder and grant the users Full Control. To do this select the Permissions Option under the Sharing Tab and Tick Full Control.



After you shared the required folders open My Computer on the Workstation / Client. Type in the shared folder's route in the field on the top of the window in the following format:

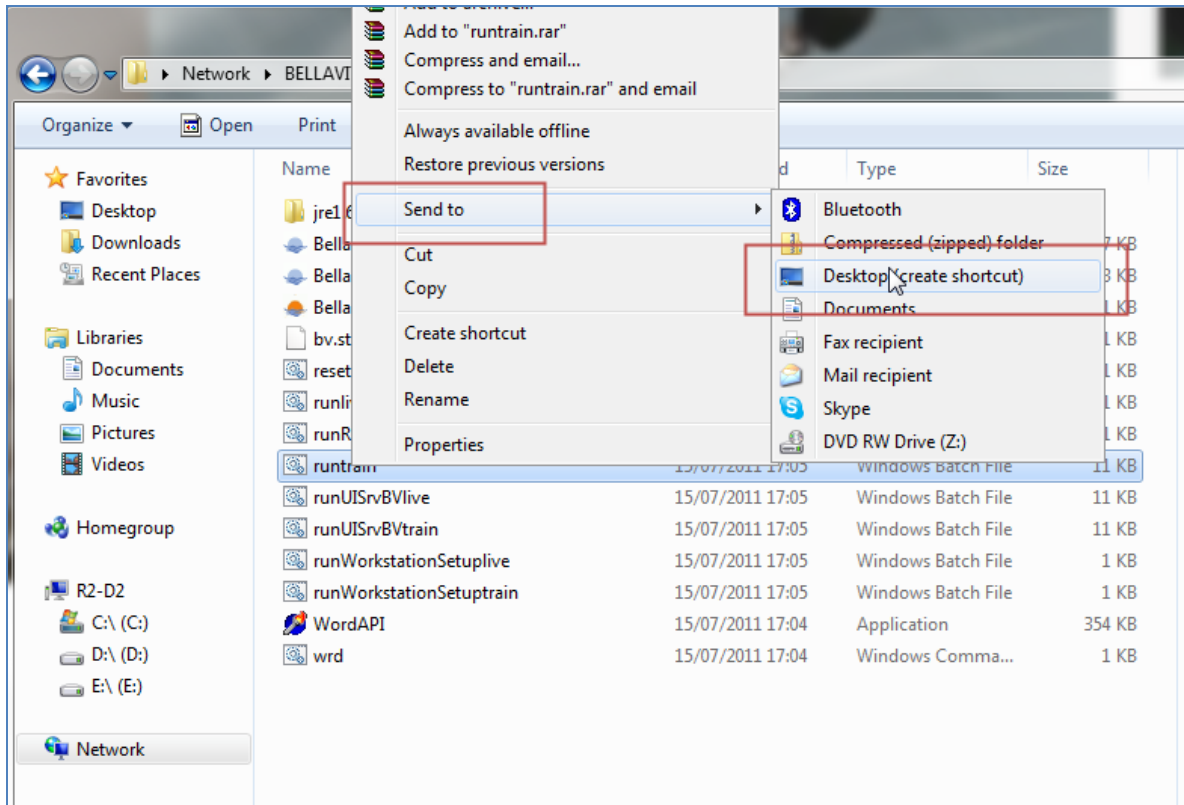
Error! Hyperlink reference not valid.

In this case it is: `\\BELLAVITA-CLEAN\bellavita` and press Enter. You might need to enter the username and password to the server to enter.

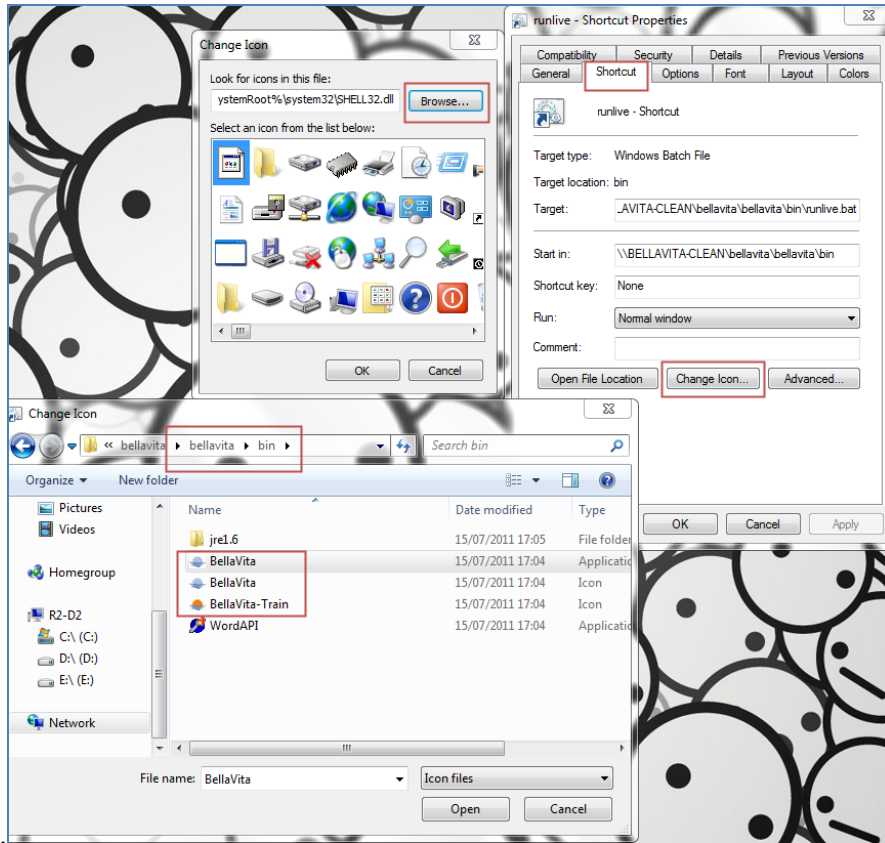


After you entered the shared folder navigate to the `bellavita\bellavita\bin` folder and create a shortcut on the Workstations Desktop for the `runlive.bat` and `runtrain.bat` files.

To do this right click on the file, then select the 'Send to' option and chose 'Desktop (create shortcut)'.



After the 2 shortcuts are created, you can change the icons by right clicking on the shortcut, then select Properties. On the Shortcut Tab select the 'Change Icon...' option, then click on 'Browse...' and search for the same bin directory where the batch files are located, and select the icon file.



The final step is to start the batch file's shortcut on the Client and that will finish the rest of the Workstation configuration and the application will start automatically as it is finished.

4 Setup continued if not set in installation

Installation of BellaVita train

Open CMD and navigate to the deployment folder in your installation folder, like:

```
C:\BV\deployment>setenv
```

The setenv command uses the setenv.bat file in deployment to set up the environment used. If you do not leave the CMD, you do not need to enter it before all ant commands. Only after this can you use the ant commands:

First we need to create the train user: bellavitatrain in the BellaVita DB (BV if not installed on the V8 DB)

```
ant db.user.create -Dproduction.state=train
```

Then we copy the current DB of the live BV to the train BV. This is used in the future as well to refresh the train BV.

```
ant db.copy.to.train
```

After this, the connection can be tested to the DB:

```
ant db.connection.test -Dproduction.state=train
```

Train BellaVita can be started by runtrain.bat – in the same folder where runlive.bat is. Setup of shortcut described in the workstation setup above.

Set up of PMS connection

If the PMS connection was not set up in the installation or it needs amended, these details are stored in local settings and setenv.bat. First, check the setup in the local-settings:

```
Installation directory\local-settings\HOSTNAME
    local.properties
    live.properties
    train.properties
```

Live.properties

Best is to open these files with notepad2 (from deployment/tools) or notepad++

The PMS relevant setting is this part:

```
# suite 8 guest and package import
# the user that is able to create v8 views. this will be the schema for the views!
dbsuite8.user=v8LIVE
dbsuite8.password=ENC(FF1TuZTzvcf66hFqSre7QBtiVYGIPqLf28bgp+F9ZEU=)
```

This is used if the PMS is Suite8 for guest and package import or Opera guest import without HTNG.

Type the username after dbsuite8.user=

Password can be set from cmd>deployment>setenv

```
ant change.password -Dname=dbsuite8.password -Dvalue=password
```

The same lines available in train.properties.

Local.properties

To enable guest import, set guestimport.enable to true. If you use Opera with HTNG – no need to change any of the below. If you use Opera with FIAS, please edit the below accordingly.

```
# Use guestimport from external reservation system (fidelio)
# Necessary external reservation system objects are created as part of 'db.full.install'
guestimport.enable=true
```

The next step is to set up where the import is from – add the host name, port and SID to the url.

```
#Fidelio url for guest import. Version 6/7: fidelio.url=jdbc:odbc:fidelio, Version 8:
fidelio.url=jdbc:oracle:thin:@SUITE8_HOST:1521:v8
fidelio.url=jdbc:oracle:thin:@PMSDBHOST:1521:SID
```

Set the type of PMS for the guest import:

If Opera:

```
#suite8 and opera differ in guest import view and suite8-only db-link
is.opera=true
```

```
#Fidelio Version. Version 6/7: Fideliov6, version 8: Fideliosuite8
fidelio.import.version=Fideliosuite8
```

If Suite8

```
#suite8 and opera differ in guest import view and suite8-only db-link
is.opera=false
```

```
#Fidelio Version. Version 6/7: Fideliov6, version 8: Fideliosuite8
fidelio.import.version=Fideliosuite8
```

If the import has been set up at the time of installation, you will see values here already. V8 means PMS in this matter.

For Opera

```
# Just remember the user input during initial installation.
# Not used for runtime generation
pms.host=PMSHOST
v8.db.name=OPERA
v8.live.user.name=LIVE
v8.live.user.password=LIVE
v8.train.user.name=TRAIN
v8.train.user.password=TRAIN
guest.imp=opera
do.train=y
```

For Suite8

```
# Just remember the user input during initial installation.
# Not used for runtime generation
pms.host=PMSHOST
v8.db.name=v8
v8.live.user.name=v8LIVE
v8.live.user.password=LIVE
v8.train.user.name=v8TRAIN
v8.train.user.password=TRAIN
guest.imp=suite8
do.train=y
```

Setenv.bat

Edit the file to see which password we need to check:

Db.pms.user is bellavita pms, password is generated by system: bellavita. No need to edit it.

```
set db.pms.password=ENC(3xcw4v0Pg6bEKrL4/hWEUufgftOPLxy9AzKNPYO5yxM=)
```

For the guest import setup requires the PMS DB system user's credentials. Change this:

```
set dbsuite8admin.password=ENC(t0T2CGDXav1/zSLkutAhnrr7znT7dF2L9uhNs4+f0UY=)
```

By CMD>deployment>setenv

ant change.password -Dname=dbsuite8admin.password -Dvalue=password

To save all the above changes:

```
CMD>deployment>setenv  
ant runtime.update
```

If any credentials are incorrect in the settings, the build will fail with the logon denied message.

Interface

If FIAS interface is used, the connection details are set as below:

```
pms.conn=fias  
# Fias Gateway  
fias.host=BellaVita server  
fias.port=5001  
# Fias Gateway directory  
fgw.service.dir=d:/BellaVita/fgw-service  
# Fias Interface Server  
fias.server.host=IFC hostname or IP  
fias.server.port=5010  
# optional timeout parameter defaults to 20 s.  
# fias.server.timeout = 20
```

HTNG is available for Opera only. In this case both guest import and interface is under these settings:

```
pms.conn=htng  
# HTNG  
htng.host = hostname of HTNG  
htng.port = 6501  
htng.resort = |  
htng.user = HTNG  
htng.password = HTNG  
htng.pms.source = OPERA  
htng.bellavita.source = BELLAVITA
```

Common changes to details set in installation

Often there are some details you need to change which were set during the installation. The PMS and IFC related information is described above. The changes you make can only be implemented by the `ant runtime.update` command. Changes in the `train.properties` are implemented by `ant runtime.update -Dproduction.state=train`

Other changes

changing the system password for the BellaVita DB:

```
CMD>deployment>setenv  
ant change.password -Dname=dbadmin.password -Dvalue=password
```

5 Tips and Tricks

Create a folder on the desktop of the server for the most often used BellaVita files:

- C:\bellavita
- C:\bellavita\deployment
- Runlive.bat and runrepadmin.bat (for report customization) in C:\bellavita\bellavita\bin
- Notepad2 and console from c:\bellavita\deployment\tools

If the installation fails with PMS connection and training set up in the dialogue – start again without setting up these connections. If successful, the connections can be set up later in local.properties as described above.